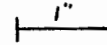




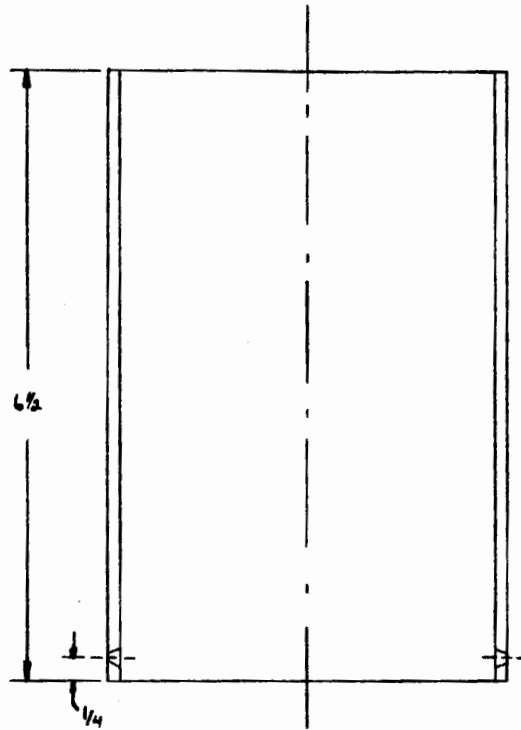
BURNER INLET

SCALE 1:1

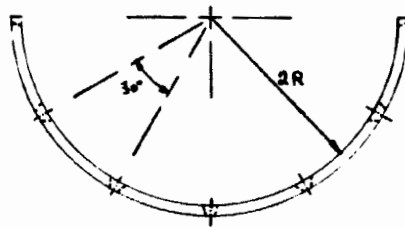


NOTE: HOLES ARE LOCATED AT 1/2  
RADIAL POSITIONS THROUGHOUT  
ENTIRE CROSS SECTION (EVERY 30°)  
ALL DIMENSIONS ARE IN INS.

EDGE VIEW  
TYPICAL

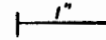


TOP VIEW  
HALF CROSS SECTION



CONNECTING FLANGE RINGS

SCALE 1:1 INS.

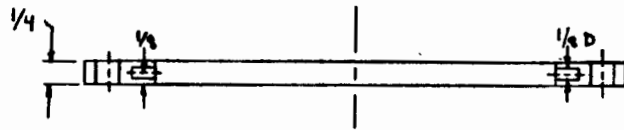


NOTE

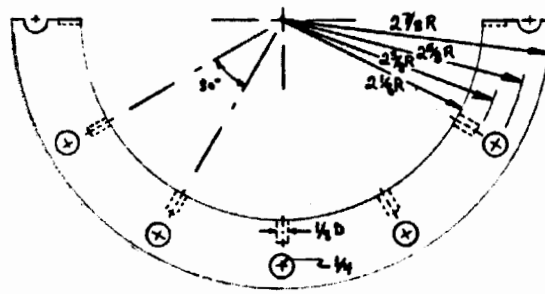
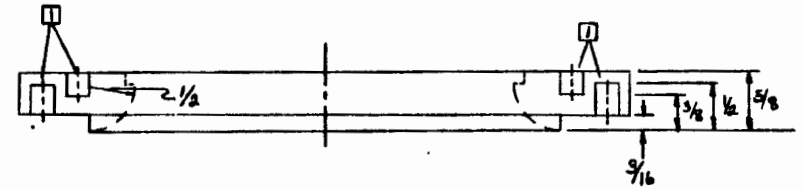
HOLES ARE LOCATED AT 12 RADIAL POSITIONS THROUGHOUT ENTIRE CROSS SECTION (EVERY 30°)

ALL DIMENSIONS IN INS.

☐ HOLES TAPPED FOR 1/4"-20 SCREW

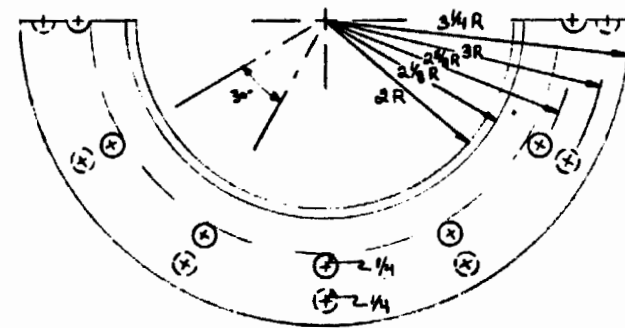


EDGE VIEW  
TYPICAL



TOP FLANGE RING

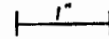
TOP VIEW  
HALF CROSS SECTION



BOTTOM FLANGE RING

FRONT FACE PANEL

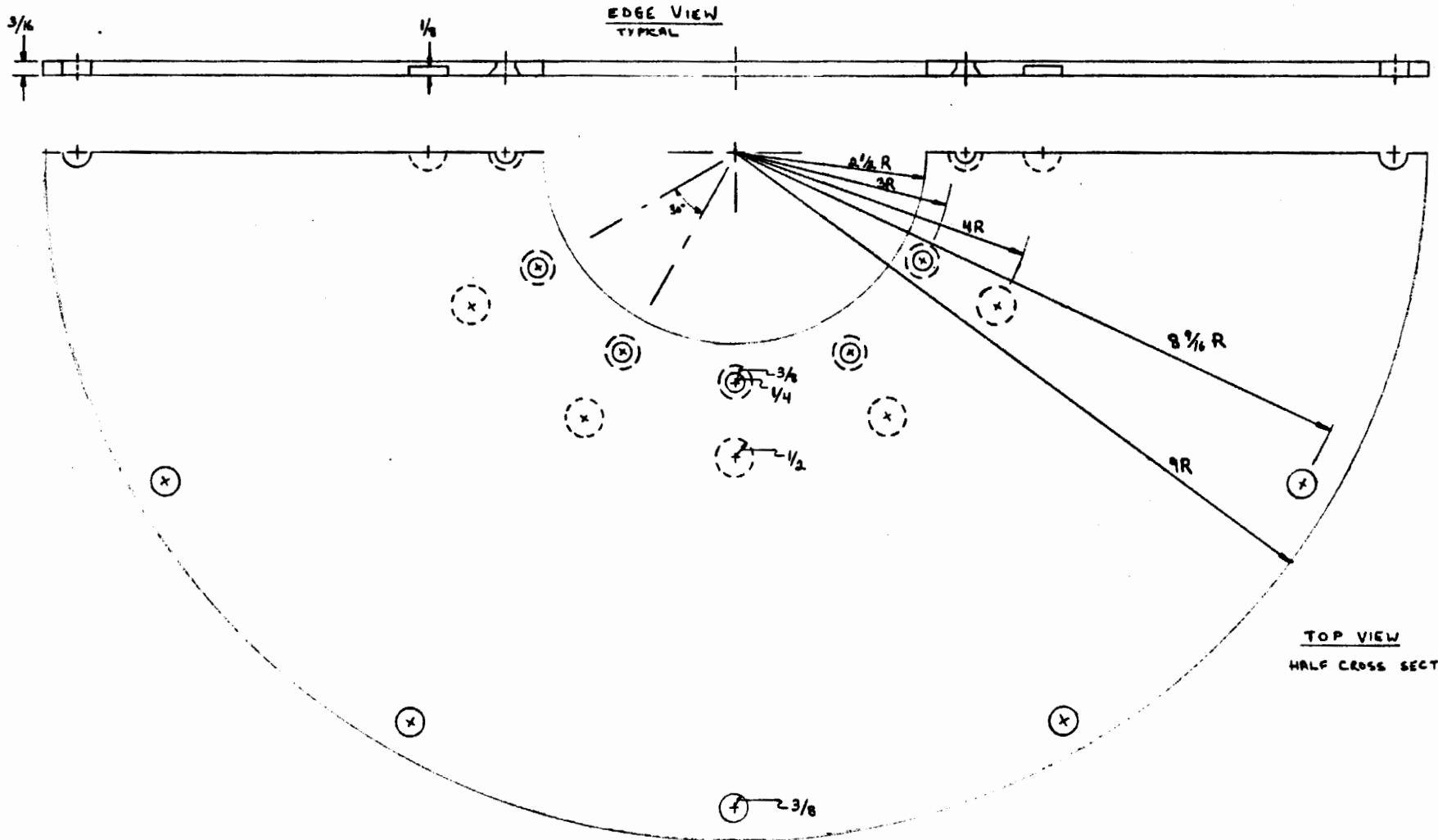
SCALE 1:1 INS.



NOTE

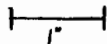
HOLES ARE LOCATED AT  
12 ANGULAR POSITIONS  
THROUGHOUT ENTIRE CROSS SECTION  
(EVERY 30°)

ALL DIMENSIONS IN INS.



ANNULAR DISK AND HUB PIPE

SCALE 1:1"



NOTE

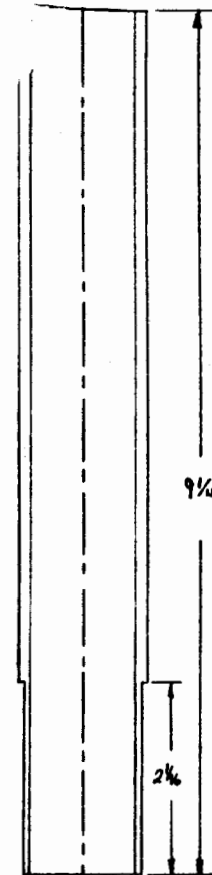
ALL DIMENSIONS IN INS.

- 1 THERE ARE 12 HOLES ALL TOGETHER EVERY 30°
- 2 WELD
- 3 HOLE C'S'K 1/8 IN.

SHEET 5

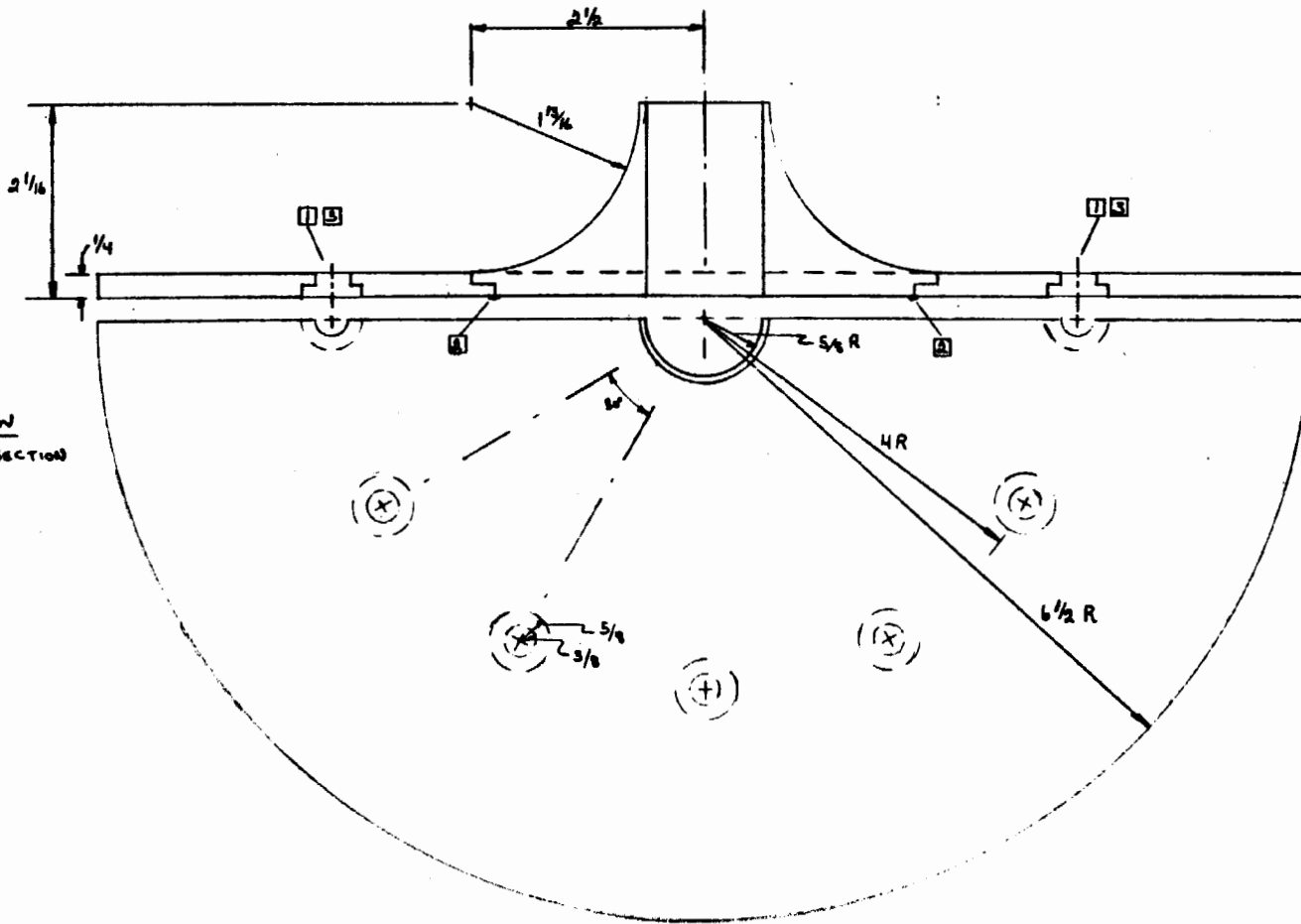
HUB PIPE

EDGE VIEW  
TYPICAL



ANNULAR DISC

EDGE VIEW  
TYPICAL



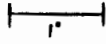
TOP VIEW  
HALF CROSS SECTION



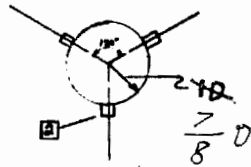
TOP VIEW  
HALF CROSS SECTION

FUEL SUPPLY LINE

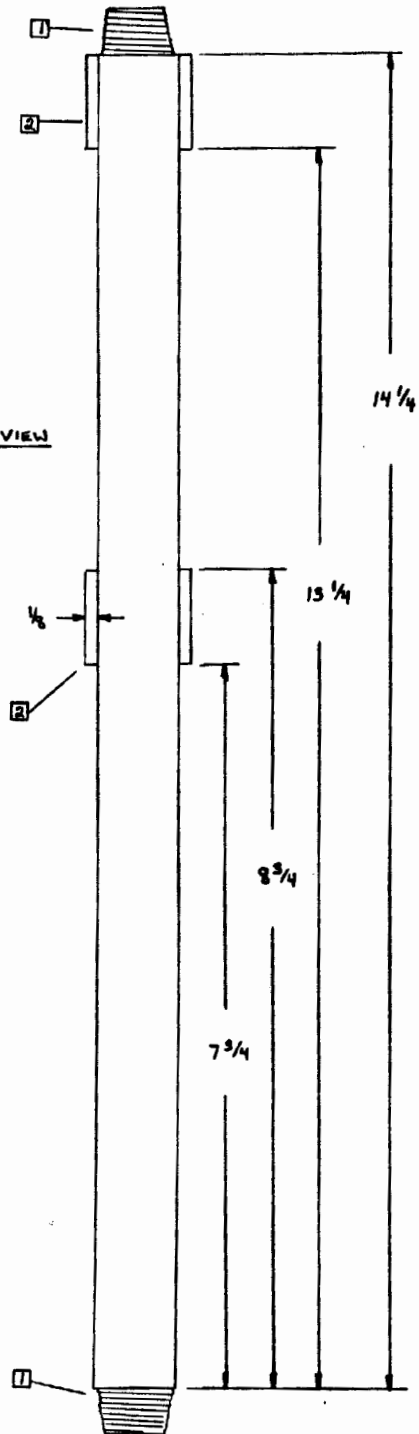
SCALE 1:1"



TOP VIEW



SIDE VIEW



NOTE

ALL DIMENSIONS IN INCHES

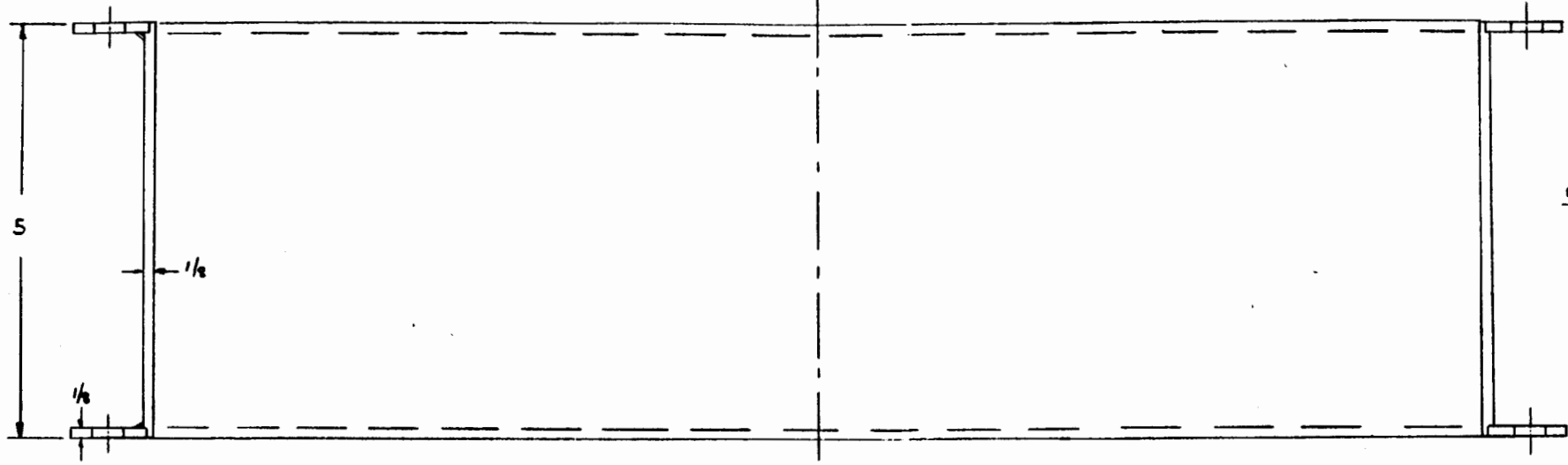
1 PIPE THREADED AT BOTH ENDS - 1/4 NPTF STEEL

2 TWO SETS OF 3 POSTS EACH

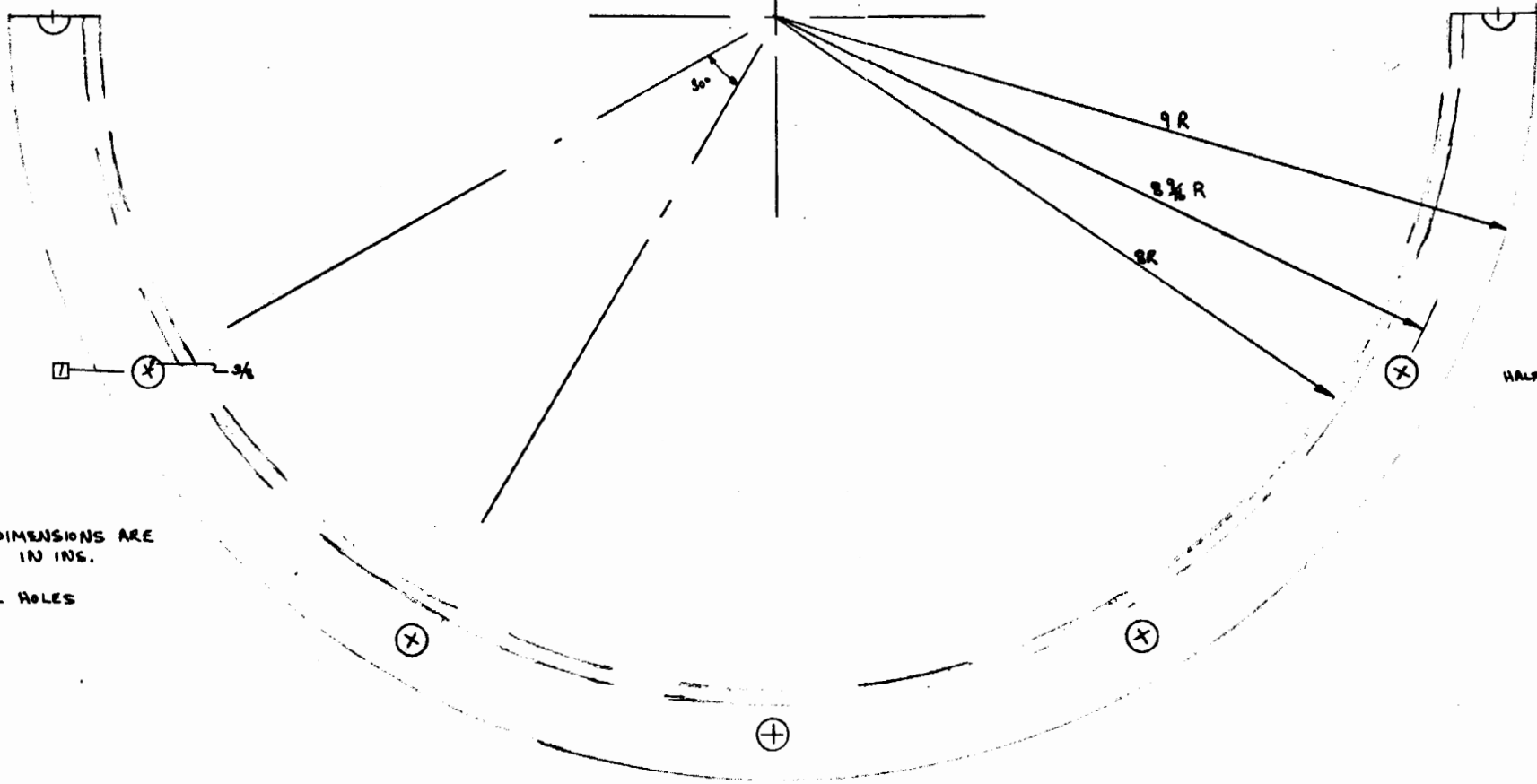
PLENUM

SCALE 1:1

1"



EDGE VIEW  
TYPICAL



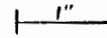
TOP VIEW  
HALF CROSS SECTION

NOTE  
ALL DIMENSIONS ARE  
IN INS.

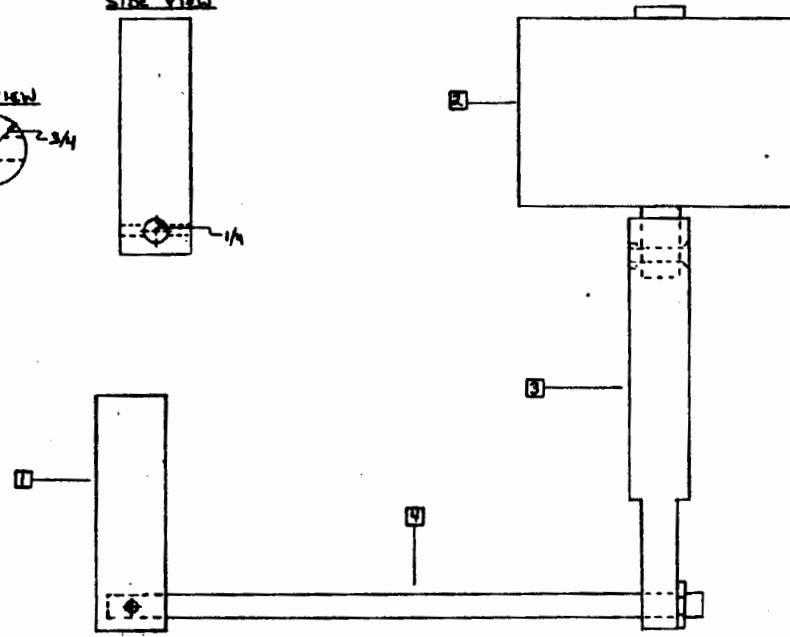
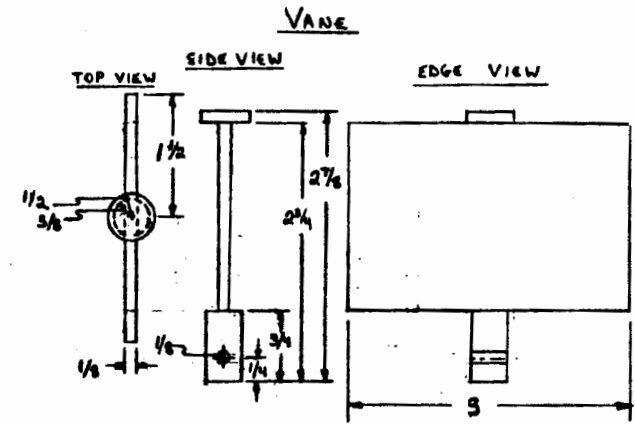
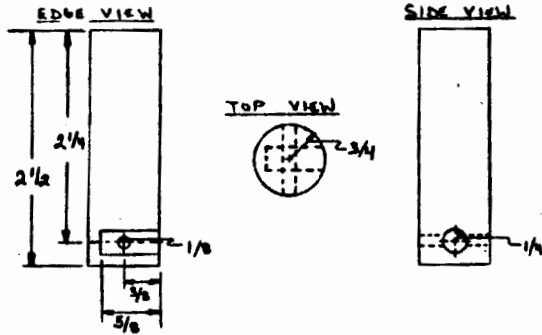
□ 12 HOLES

VANE ASSEMBLY

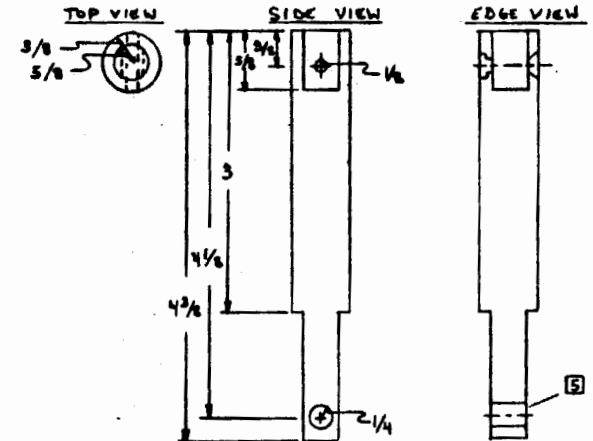
SCALE 1:1



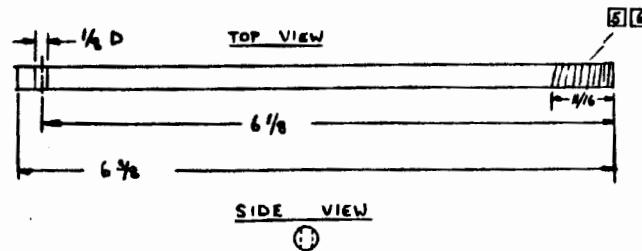
HANDLE



VANE POST



HANDLE POST



- NOTE  
 ALL DIMENSIONS ARE IN INS.  
 ① ONE HANDLE ONLY  
 ② 12 VANES  
 ③ 12 VANE POSTS  
 ④ 12 HANDLE POSTS  
 ⑤ THREADED 1/4-20 (12)  
 ⑥ BAR IS THREADED 11/16 INS.



BACK FACE PANEL

NOTES

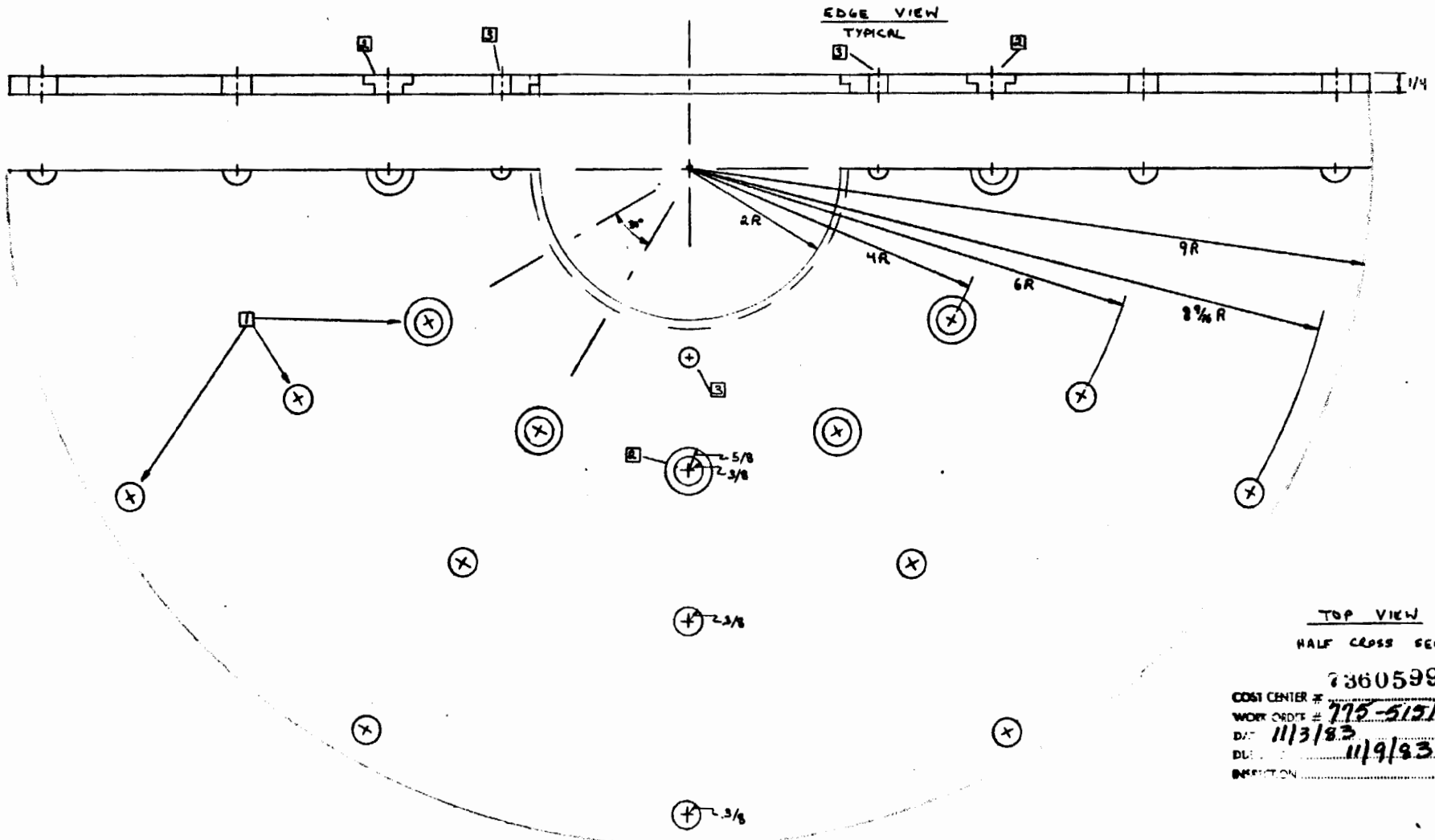
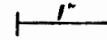
ALL DIMENSIONS ARE IN INS.

1 HOLES ARE LOCATED AT 12 ANGULAR POSITIONS THROUGHOUT ENTIRE CROSS SECTION (EVERY 30°)

2 HOLE C'S'K 1/8 IN.

3 HOLE TAPPED FOR 1/4-20 SCREW - 4 HOLES / 5.00 B.C.

SCALE 1:1



TOP VIEW  
HALF CROSS SECTION

COST CENTER # 7360599  
 WORK ORDER # 775-5151  
 DATE 11/3/83  
 DUE 11/9/93  
 INSPECTION

MOVEABLE RING ASSEMBLY

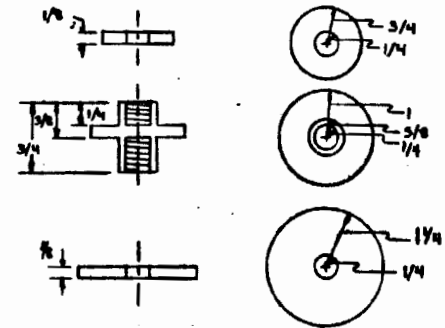
SCALE 1:1 INS.

1"

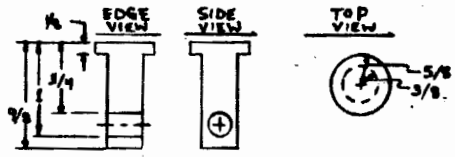
RING SUPPORT <sup>2</sup>

EDGE VIEW

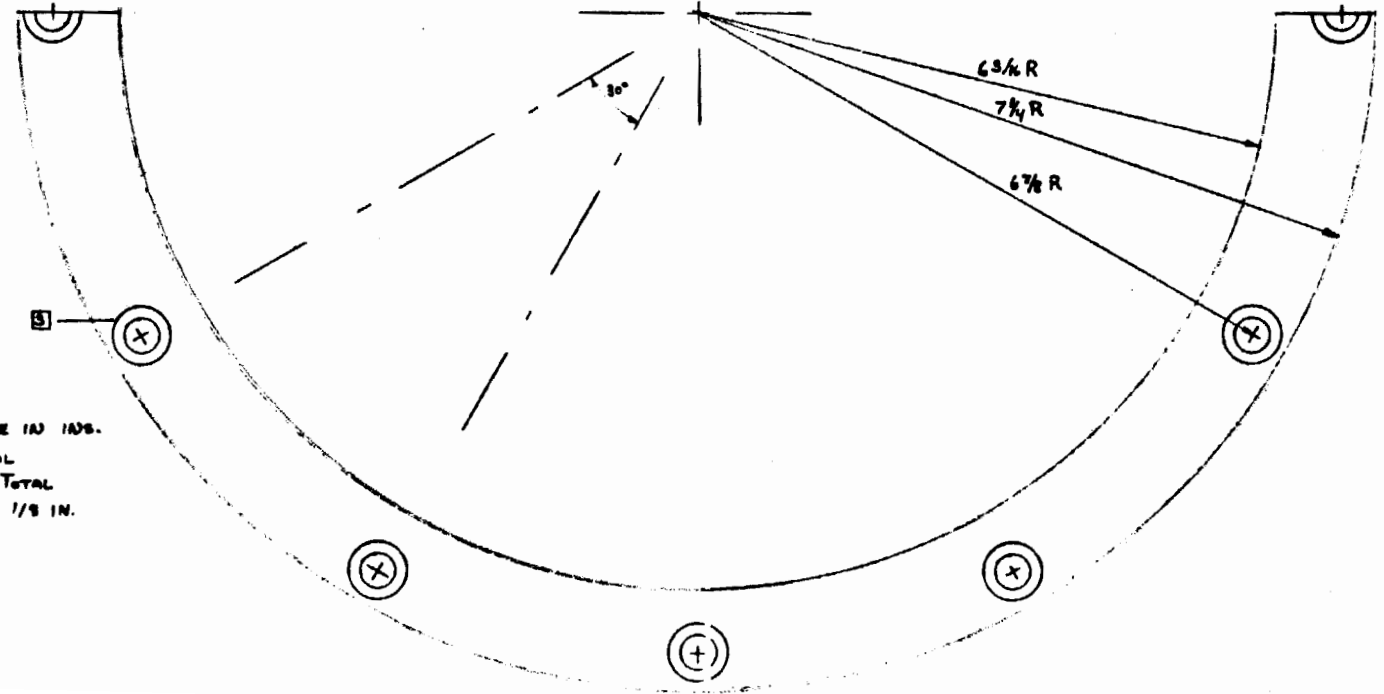
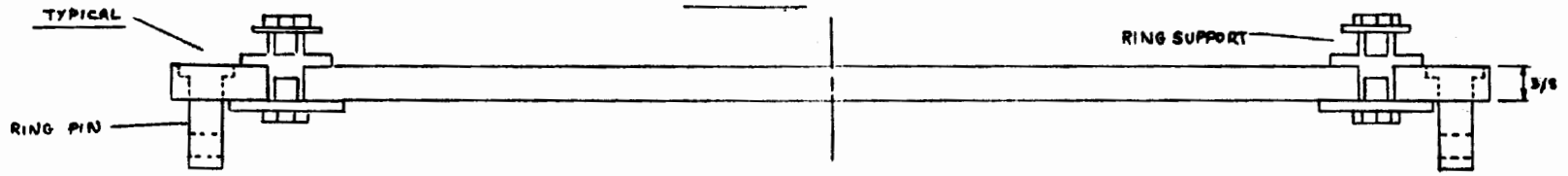
TOP VIEW



RING PIN <sup>1</sup>



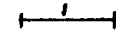
RING  
EDGE VIEW



- NOTES  
 ALL DIMENSIONS ARE IN INS.  
<sup>1</sup> 12 RING PINS TOTAL  
<sup>2</sup> 12 RING SUPPORTS TOTAL  
<sup>3</sup> 12 HOLES C'S'R 1/8 IN.

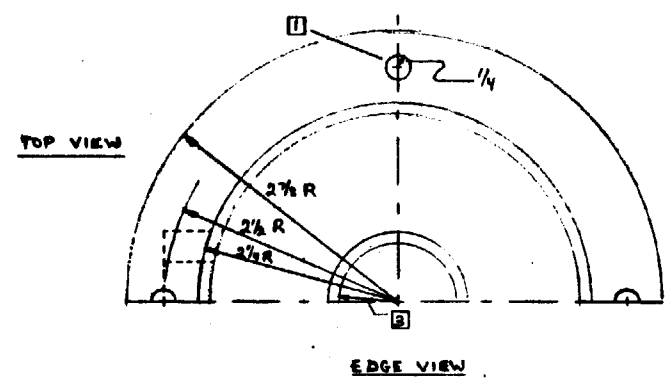
BASE AND SUPPORT ASSEMBLIES

SCALE 1:1



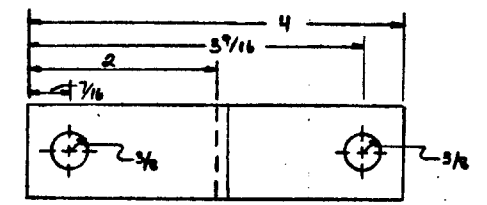
- NOTES**  
 ALL DIMENSIONS ARE IN INS.
- ① 4 HOLES
  - ② 1/2 NPTF TAPPED
  - ③ 1 1/4 NPTF TAPPED
  - ④ FITTING TO BE SUPPLIED
  - ⑤ SIX (6) LEG SECTIONS

BASE ASSEMBLY

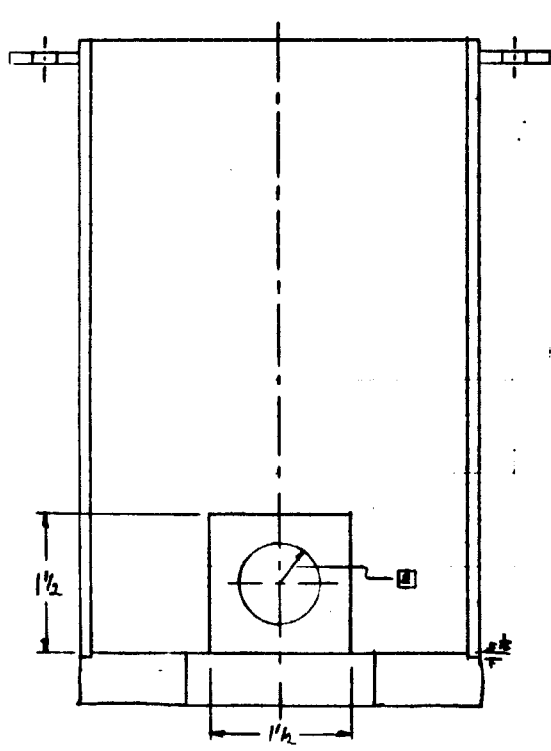


SUPPORT ASSEMBLY

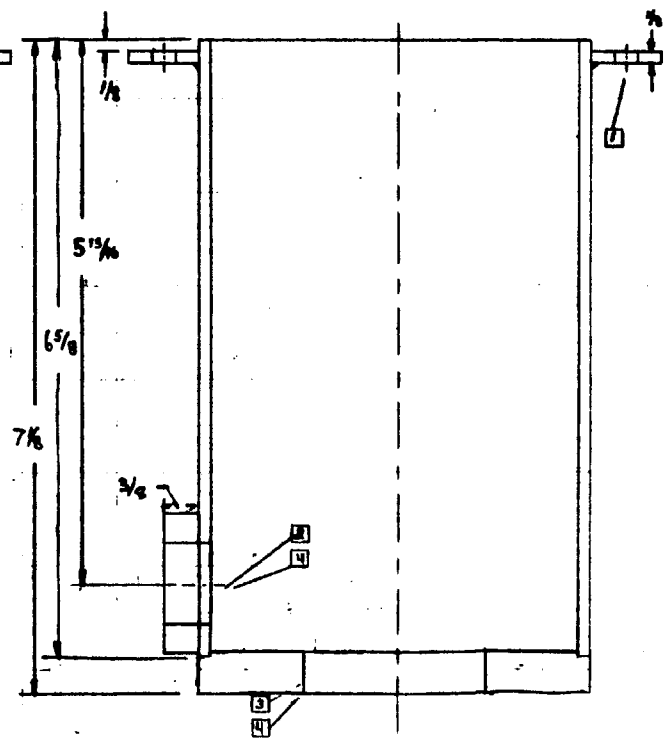
TOP VIEW



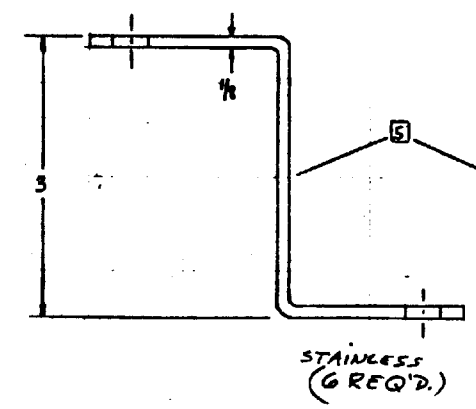
SIDE VIEW



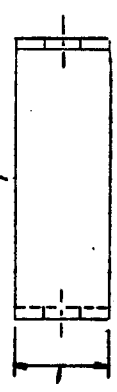
EDGE VIEW



SIDE VIEW



FRONT VIEW



COST CENTER # 7860599  
 WORK ORDER # 775-5151  
 DATE 11/3/83  
 DUE DATE 11/9/83  
 INSPECTION